

netZero^{usa}[®]
LED LIGHTING SOLUTIONS

PRODUCT CATALOG

AUTUMN 2024

REVISION 24.3.2





LED PRODUCT CATALOG TABLE OF CONTENTS

AUTUMN 2024

REVISION 24.3.2



FLAT PANELS.....	2	AREA LIGHTS.....	32
8000 FX SERIES FLAT PANELS	2	5000 AX SERIES AREA LIGHTS	32
8000 FX SERIES ACCESSORIES.....	3	5000 AX SERIES ACCESSORIES	33
8000R FX SERIES FLAT PANEL RETROFITS.....	4	5000 AR SERIES AREA LIGHTS.....	34
		5000 AR SERIES ACCESSORIES	35
CENTER BASKETS	6	WALL PACKS	36
3000 CX SERIES CENTER BASKETS.....	6	4000 WX SERIES WALL PACKS	36
3000R CX SERIES CENTER BASKET RETROFITS.....	7	4000 WX SERIES ACCESSORIES.....	37
		4000 WC SERIES WALL PACKS.....	38
HIGH BAYS	8	4000 WC SERIES ACCESSORIES	39
9000 HX SERIES LINEAR HIGH BAYS.....	8	SPORTS LIGHTS.....	40
9000 HX SERIES ACCESSORIES.....	10	7000 SS SERIES SPORTS & STADIUM LIGHTS	40
9000 HS SERIES LINEAR HIGH BAYS.....	12		
9000 HS SERIES ACCESSORIES	14	ADDITIONAL EXTERIOR LIGHTING	42
9100 HS SERIES UFO HIGH BAYS.....	16	FLOOD, GARAGE & CANOPY LIGHTS	42
9100 HS SERIES ACCESSORIES	17		
LINEAR LIGHTS.....	18	OTHER LIGHTING PRODUCTS.....	44
2000 LX SERIES SHOP LIGHTS.....	18	COB LIGHTS.....	44
2000 LX SERIES ACCESSORIES.....	19	HID RETROFITS.....	46
2000R LX SERIES SHOP LIGHT RETROFITS	20		
2000R LS SERIES SHOP LIGHT RETROFITS.....	21	EGRESS, POWER & SENSORS	48
2100 LX SERIES VAPOR TIGHT	22	EMERGENCY/EXIT LIGHTS	48
2100 LS SERIES BAR LIGHT	22	STEP-DOWN TRANSFORMERS	49
		SURGE SUPPRESSION	50
DOWN LIGHTS.....	24	BATTERY PACKS	51
6000 DX SERIES DOWN LIGHTS	24	OCCUPANCY SENSOR & DIMMER	52
6000 DX SERIES ACCESSORIES	25		
6000 DS SERIES DOWN LIGHTS	26	COMPANY CONTACTS	54
		SALES, PRODUCT & OPERATIONS SUPPORT	54
RETROFIT STRIP KITS	28		
LENSED RETROFIT STRIP KITS.....	28		
LENSED RETROFIT STRIP KIT ACCESSORIES	29		
STANDARD RETROFIT STRIP KITS.....	30		
STANDARD RETROFIT STRIP KIT ACCESSORIES	31		



LED FLAT PANELS DUAL 3-WAY SWITCHABLE



SERIES OVERVIEW

NEW CONSTRUCTION



8014 FX

8022 FX

8024 FX

Part Number(s)	NZ-8140.2	NZ-8240.2	NZ-8450.2
Description	LED Flat Panel 1' X 4' - Dual 3-Way Switchable	LED Flat Panel 2' X 2' - Dual 3-Way Switchable	LED Flat Panel 2' X 4' - Dual 3-Way Switchable
CCT	Switchable: 3500/4000/5000 K	Switchable: 3500/4000/5000 K	Switchable: 3500/4000/5000 K
Input Power	Switchable: 20/30/40 W	Switchable: 20/30/40 W	Switchable: 30/40/50 W
Max Efficacy	148 lm/W	147 lm/W	146 lm/W
Max Lumens	5612 lm	5543 lm	6886 lm
Input Voltage	110 - 277 V	110 - 277 V	110 - 277 V
IP Rating	IP20	IP20	IP20
Warranty	7 Years	7 Years	7 Years
Avg Life	L70 > 100,000 Hours	L70 > 100,000 Hours	L70 > 100,000 Hours
Dimensions	47.99" x 12.01" x 1.77"	24.02" x 24.02" x 1.77"	47.99" x 24.02" x 1.77"
Operating Temp.	-14°F to 113°F	-14°F to 113°F	-14°F to 113°F
Dimmable	0 - 10 V DC	0 - 10 V DC	0 - 10 V DC
Housing	Aluminum Frame; White	Aluminum Frame; White	Aluminum Frame; White
Accessories	Surface Mount	Surface Mount	Surface Mount
Options	Factory-installed BBU	Factory-installed BBU	Factory-installed BBU

PACKAGING

Box Dimensions	49.41" X 7.87" X 14.96"	25.28" X 7.87" X 27.44"	49.41" X 7.87" X 27.44"
Box Weight	26.46 lbs	24.25 lbs	48.5 lbs
Units/Box	4	4	4
Boxes/Pallet	-	-	-

QUALIFICATIONS

DLC Listed	PREMIUM 5.1	STANDARD 5.1	STANDARD 5.1
UL Certified	1598	1598	1598



LED FLAT PANELS DUAL 3-WAY SWITCHABLE



SERIES OVERVIEW

NEW CONSTRUCTION

ACCESSORIES



Part Number	Description	Fits Products	Ordering Notes
ACC-8140.2-M	8014 FX 1' x 4' Surface Mount	NZ-8140.2	Optional accessory
ACC-8240-SM	8022 FX 2' x 2' Surface Mount	NZ-8240.2	Optional accessory
ACC-8450-SM	8024 FX 2' x 4' Surface Mount	NZ-8450.2	Optional accessory





LED FLAT PANEL RETROFITS DUAL 3-WAY SWITCHABLE



SERIES OVERVIEW

RETROFIT



8014R FX

8022R FX

8024R FX

Part Number(s)	NZ-7125.1-QQ	NZ-7225.2-QQ	NZ-7436.2-QQ
Description	Dual-Switchable LED Flat Panel Retrofit 1'X4'	Dual-Switchable LED Flat Panel Retrofit 2'X2'	Dual-Switchable LED Flat Panel Retrofit 2'X4'
CCT	Switchable: 3500/4000/5000 K	Switchable: 3500/4000/5000 K	Switchable: 3500/4000/5000 K
Input Power	Switchable: 18/22/25 W	Switchable: 18/22/25 W	Switchable: 23/30/36 W
Max Efficacy	133 lm/W	135 lm/W	137 lm/W
Max Lumens	3175 lm	3225 lm	4644 lm
Input Voltage	AC100-277V	AC100-277V	AC100-277V
IP Rating	IP20	IP20	IP20
Warranty	7 Years	7 Years	7 Years
Avg Life	L70 > 100,000 hours	L70 > 100,000 hours	L70 > 100,000 hours
Dimensions	47.9" x 11.9" x 3.1"	23.9" x 23.9" x 3.1"	47.9" x 23.9" x 3.1"
Operating Temp.	-20°C (-4°F) to 50°C (122°F)	-20°C (-4°F) to 50°C (122°F)	-20°C (-4°F) to 50°C (122°F)
Dimmable	0 - 10 V DC	0 - 10 V DC	0 - 10 V DC
Housing	Galvanized Steel; White	Galvanized Steel; White	Galvanized Steel; White
Accessories	Troffer Mounting Hinge Kit (included)	Troffer Mounting Hinge Kit (included)	Troffer Mounting Hinge Kit (included)
Options	-	-	-

PACKAGING

	NZ-7125.1-QQ	NZ-7225.2-QQ	NZ-7436.2-QQ
Box Dimensions	50" X 7.5" X 13.2"	26.2" X 7.5" X 24.6"	51.2" X 7.5" X 24.6"
Box Weight	29.2 lbs	28 lbs	59 lbs
Units/Box	4	4	4
Boxes/Pallet	-	-	-

QUALIFICATIONS

	NZ-7125.1-QQ	NZ-7225.2-QQ	NZ-7436.2-QQ
DLC Listed	STANDARD 5.1	PENDING	PENDING
UL Certified	1598 C	1598 C	1598 C



LED CENTER BASKET TROFFERS DUAL 3-WAY SWITCHABLE



SERIES OVERVIEW

NEW CONSTRUCTION



3022 CX



3024 CX

Part Number(s)	NZ-3230.2-QQ	NZ-3434.2-QQ
Description	LED Center Basket Troffer 2' X 2' - Dual 3-Way Switchable	LED Center Basket Troffer 2' X 4' - Dual 3-Way Switchable
CCT	Switchable: 3500/4000/5000 K	Switchable: 3500/4000/5000 K
Input Power	Switchable: 20/25/30 W	Switchable: 25/30/34 W
Max Efficacy	135 lm/W	136 lm/W
Max Lumens	3840 lm	4386 lm
Input Voltage	120-277 V	120-277 V
IP Rating	IP20	IP20
Warranty	7 Years	7 Years
Avg Life	L70 > 100,000 Hours	L70 > 100,000 Hours
Dimensions	23.8" x 23.8" x 2.8"	47.8" x 23.8" x 2.8"
Operating Temp.	-20°C (-4°F) to 50°C (122°F)	-20°C (-4°F) to 50°C (122°F)
Dimmable	0 - 10 V DC	0 - 10 V DC
Housing	Galvanized Steel; White	Galvanized Steel; White
Accessories	-	-
Options	-	-

PACKAGING

	NZ-3230.2-QQ	NZ-3434.2-QQ
Box Dimensions	25.6" X 24.8" X 3.1"	49.6" X 24.8" X 3.1"
Box Weight	9 lbs	14.7 lbs
Units/Box	1	1
Boxes/Pallet	-	-

QUALIFICATIONS

	NZ-3230.2-QQ	NZ-3434.2-QQ
DLC Listed	STANDARD 5.1	STANDARD 5.1
UL Certified	1598	1598



LED CENTER BASKET RETROFITS DUAL 3-WAY SWITCHABLE



SERIES OVERVIEW

RETROFIT



3022R CX



3024R CX

Part Number(s)	NZ-1230.2	NZ-1435.2
Description	LED Center Basket Retrofit 2' X 2' - Dual 3-Way Switchable	LED Center Basket Retrofit 2' X 4' - Dual 3-Way Switchable
CCT	Switchable: 3500/4000/5000 K	Switchable: 3500/4000/5000 K
Input Power	Switchable: 20/25/30 W	Switchable: 25/30/35 W
Max Efficacy	125 lm/W	138 lm/W
Max Lumens	3750 lm	4515 lm
Input Voltage	120-277 V	120-277 V
IP Rating	IP20	IP20
Warranty	7 Years	7 Years
Avg Life	L70 > 100,000 Hours	L70 > 100,000 Hours
Dimensions	23.9" x 23.9" x 3.1"	47.8" x 23.9" x 3.1"
Operating Temp.	-20°C (-4°F) to 50°C (122°F)	-20°C (-4°F) to 50°C (122°F)
Dimmable	0 - 10 V DC	0 - 10 V DC
Housing	Galvanized Steel; White	Galvanized Steel; White
Accessories	-	-
Options	-	-

PACKAGING

	25.7" X 25" X 5.3"	50" X 25" X 5.3"
Box Dimensions	25.7" X 25" X 5.3"	50" X 25" X 5.3"
Box Weight	17 lbs	27.7 lbs
Units/Box	2	2
Boxes/Pallet	-	-

QUALIFICATIONS

DLC Listed	PREMIUM 5.1	PREMIUM 5.1
UL Certified	1598 C	1598 C



LED LINEAR HIGH BAYS DUAL 3-WAY SWITCHABLE



SERIES OVERVIEW

NEW CONSTRUCTION



9008 HX



9010 HX

Part Number(s)	NZ-9115.5AQQ	NZ-9135.5AQQ
Description	LED Linear Low-Bay 78-115W - Dual 3/2-Way Switchable	LED Linear Mid-Bay 100-135W - Dual 3/2-Way Switchable
CCT	Switchable: 4000/5000 K	Switchable: 4000/5000 K
Input Power	Switchable: 78/92/115 W	Switchable: 100/115/135 W
Max Efficacy	150 lm/W	150 lm/W
Max Lumens	17,250 lm	20,250 lm
Input Voltage	120-277 V	120-277 V
IP Rating	IP20	IP20
Warranty	7 Years	7 Years
Avg Life	L70 > 100,000 Hours	L70 > 100,000 Hours
Dimensions	16.5" x 10.2" x 1.8"	16.5" x 10.2" x 1.8"
Operating Temp.	-20°C (-4°F) to 50°C (122°F)	-20°C (-4°F) to 50°C (122°F)
Dimmable	0 - 10 V DC	0 - 10 V DC
Housing	Galvanized Steel; White	Galvanized Steel; White
Accessories	Wire Cage, Pendant Mount	Wire Cage, Pendant Mount
Options	Occupancy Sensor, Sensor Remote	Occupancy Sensor, Sensor Remote

PACKAGING

	NZ-9115.5AQQ	NZ-9135.5AQQ
Box Dimensions	17.7" X 8.6" X 11"	17.7" X 8.6" X 11"
Box Weight	24 lbs	24 lbs
Units/Box	4	4
Boxes/Pallet	-	-

QUALIFICATIONS

	NZ-9115.5AQQ	NZ-9135.5AQQ
DLC Listed	PREMIUM 5.1	PREMIUM 5.1
UL Certified	1598	1598



LED LINEAR HIGH BAYS DUAL 3-WAY SWITCHABLE



SERIES OVERVIEW

NEW CONSTRUCTION



9020 HX



9030 HX

Part Number(s)	NZ-9200.5AQQ	NZ-9270.5AQQ
Description	LED Linear High-Bay 155-200W - Dual 3/2-Way Switchable	LED Linear High-Bay 200-270W - Dual 3/2-Way Switchable
CCT	Switchable: 4000/5000 K	Switchable: 4000/5000 K
Input Power	Switchable: 155/185/200 W	Switchable: 200/230/270 W
Max Efficacy	150 lm/W	150 lm/W
Max Lumens	30,000 lm	40,500 lm
Input Voltage	120-277 V	120-277 V
IP Rating	IP20	IP20
Warranty	7 Years	7 Years
Avg Life	L70 > 100,000 Hours	L70 > 100,000 Hours
Dimensions	22.8" x 10.2" x 1.8"	31.1" x 10.2" x 1.8"
Operating Temp.	-20°C (-4°F) to 50°C (122°F)	-20°C (-4°F) to 50°C (122°F)
Dimmable	0 - 10 V DC	0 - 10 V DC
Housing	Galvanized Steel; White	Galvanized Steel; White
Accessories	Wire Cage, Pendant Mount	Wire Cage, Pendant Mount
Options	Occupancy Sensor, Sensor Remote	Occupancy Sensor, Sensor Remote

PACKAGING

	NZ-9200.5AQQ	NZ-9270.5AQQ
Box Dimensions	24" X 8.6" X 11"	32.3" X 8.6" X 11"
Box Weight	31 lbs	42.7 lbs
Units/Box	4	4
Boxes/Pallet	-	-

QUALIFICATIONS

DLC Listed	PREMIUM 5.1	PREMIUM 5.1
UL Certified	1598	1598



LED LINEAR HIGH BAYS DUAL 3-WAY SWITCHABLE



SERIES OVERVIEW

NEW CONSTRUCTION

ACCESSORIES

	Part Number	Description	Fits Products	Ordering Notes
	ACC-9000.5AQQ.WC	HX Series Wire Cage	NZ-9115.5AQQ, NZ-9135.5AQQ	Optional accessory
	ACC-9200.5AQQ.WC	9020 HX Wire Cage	NZ-9200.5AQQ	Optional accessory
	ACC-9270.5AQQ.QC	9030 HX Wire Cage	NZ-9270.5AQQ	Optional accessory
	ACC-9000.5AQQ.PM	9000 HX Series Pendant Mount	ALL	Optional accessory
	ACC-9000.5AQQ-OS	9100 HX Series Occ Sensor	ALL	Optional accessory
	ACC-9000.5AQQ-R	9100 HX Series Occ Sensor Remote	ALL	Optional accessory



LED LINEAR HIGH BAYS STATIC POWER & CCT



SERIES OVERVIEW

NEW CONSTRUCTION



9008 HS

9010 HS

Part Number(s)	NZ-9080.51	NZ-9110.5
Description	LED Linear Low-Bay - 80W	LED Linear Mid-Bay - 105W
CCT	5000 K	5000 K
Input Power	80 W	105 W
Max Efficacy	135 lm/W	136 lm/W
Max Lumens	10,800 lm	14,280 lm
Input Voltage	120-277 V	120-277 V
IP Rating	IP20	IP20
Warranty	7 Years	7 Years
Avg Life	L70 > 100,000 Hours	L70 > 100,000 Hours
Dimensions	24.6" x 12.8" x 2"	24.8" x 13" x 2.2"
Operating Temp.	-40°F~113°F	-20°C (-4°F) to 50°C (122°F)
Dimmable	0 - 10 V DC	0 - 10 V DC
Housing	Galvanized Steel; White	Galvanized Steel; White; Factory Sensor Socket
Accessories	Pendant Mount, Wire Cage	Surface Mount, Pendant Mount, Wire Cage
Options	Occupancy Sensor w/ Bracket	Center Mount Occupancy Sensor Receptacle

PACKAGING

Box Dimensions	26" X 14.2" X 12.6"	25.8" X 15.4" X 2.6"
Box Weight	32.6 lbs	11.2 lbs
Units/Box	4	1
Boxes/Pallet	-	-

QUALIFICATIONS

DLC Listed	PREMIUM 5.1	PREMIUM 5.1
UL Certified	1598	1598



LED LINEAR HIGH BAYS STATIC POWER & CCT



SERIES OVERVIEW

NEW CONSTRUCTION



9015 HS

9030 HS

Part Number(s)	NZ-9160.4	NZ-9321.5
Description	LED Linear High-Bay - 155W	LED Linear High-Bay - 300W
CCT	5000 K	5000 K
Input Power	155 W	300 W
Max Efficacy	136 lm/W	136 lm/W
Max Lumens	21,080 lm	40,800 lm
Input Voltage	120-277 V	120-277 V
IP Rating	IP20	IP20
Warranty	7 Years	7 Years
Avg Life	L70 > 100,000 Hours	L70 > 100,000 Hours
Dimensions	24.8" x 13" x 2.2"	46.5" x 18.9" x 2.2"
Operating Temp.	-20°C (-4°F) to 50°C (122°F)	-20°C (-4°F) to 50°C (122°F)
Dimmable	0 - 10 V DC	0 - 10 V DC
Housing	Galvanized Steel; White	Galvanized Steel; White
Accessories	Surface Mount, Pendant Mount, Wire Cage	Surface Mount, Pendant Mount, Wire Cage
Options	Occupancy Sensor w/ Bracket	Occupancy Sensor w/ Bracket

PACKAGING

	9015 HS	9030 HS
Box Dimensions	25.8" X 15.4" X 2.6"	47.6" X 19.3" X 2.6"
Box Weight	11.2 lbs	22.4 lbs
Units/Box	1	1
Boxes/Pallet	-	-

QUALIFICATIONS

	9015 HS	9030 HS
DLC Listed	PREMIUM 5.1	PREMIUM 5.1
UL Certified	1598	1598



LED LINEAR HIGH BAYS STATIC POWER & CCT



SERIES OVERVIEW

NEW CONSTRUCTION

ACCESSORIES

Part Number	Description	Fits Products	Ordering Notes	
	ACC-9000.3-SM	9000 HS Series Surface Mount	NZ-9110.5, NZ-9160.4, NZ-9321.5	Optional accessory
	ACC-9000.3-PM	9000 HS Series Pendant Mount	NZ-9110.5, NZ-9160.4, NZ-9321.5	Optional accessory
	ACC-9081-PM	9008 HS Pendant Mount	NZ-9081.51	Optional accessory
	ACC-9081-WC	9008 HS Wire Cage	NZ-9081.51	Optional accessory
	ACC-9321.3/4-WC	9030 HS Wire Cage	NZ-9321.5	Optional accessory
	ACC-9000-OS	9010 HS Occ Sensor w/Bracket	NZ-9110.5, NZ-9160.4, NZ-9321.5	Optional accessory



LED UFO HIGH BAYS STATIC POWER & CCT



SERIES OVERVIEW

NEW CONSTRUCTION



9110 HS

9115 HS

9120 HS

Part Number(s)	NZ-U100.1	NZ-U150.1	NZ-U200.1
Description	LED UFO Mid-Bay - 100W	LED UFO High-Bay - 150W	LED UFO High-Bay - 200W
CCT	5000 K	5000 K	5000 K
Input Power	100 W	150 W	200 W
Max Efficacy	140 lm/W	140 lm/W	140 lm/W
Max Lumens	14,000 lm	21,000 lm	28,000 lm
Input Voltage	120-277 V	120-277 V	120-277 V
IP Rating	IP65	IP65	IP65
Warranty	7 Years	7 Years	7 Years
Avg Life	L70 > 100,000 Hours	L70 > 100,000 Hours	L70 > 100,000 Hours
Dimensions	11.8" x 11.8" x 6.4"	11.8" x 11.8" x 6.4"	14.2" x 14.2" x 6.8"
Operating Temp.	-40°F~122°F	-40°F~122°F	-40°F~122°F
Dimmable	0 - 10 V DC	0 - 10 V DC	0 - 10 V DC
Housing	Die-cast Aluminum; Bronze	Die-cast Aluminum; Bronze	Die-cast Aluminum; Bronze
Accessories	Mounting Hook, Wire Cage	Mounting Hook, Wire Cage	Mounting Hook, Wire Cage
Options	Occ Sensor & Remote	Occ Sensor & Remote	Occ Sensor & Remote

PACKAGING

	NZ-U100.1	NZ-U150.1	NZ-U200.1
Box Dimensions	14.2" X 14.2" X 7.7"	14.2" X 14.2" X 7.7"	16.5" X 16.5" X 8.1"
Box Weight	7.3 lbs	7.3 lbs	10.3 lbs
Units/Box	1	1	1
Boxes/Pallet	-	-	-

QUALIFICATIONS

	NZ-U100.1	NZ-U150.1	NZ-U200.1
DLC Listed	PREMIUM 5.1	PREMIUM 5.1	PREMIUM 5.1
UL Certified	1598	1598	1598



LED UFO HIGH BAYS STATIC POWER & CCT



SERIES OVERVIEW

NEW CONSTRUCTION

ACCESSORIES



ACC-U100-WC

9110 HS Wire Cage

NZ-U100.1

Optional accessory



ACC-U150-WC

9115 HS Wire Cage

NZ-U150.1

Optional accessory



ACC-U200-WC

9120 HS Wire Cage

NZ-U200.1

Optional accessory



ACC-U-12Hook

9100 HS Series Mounting Hook

ALL

Optional accessory



ACC-U000-OS

9100 HS Series Occ Sensor

ALL

Optional accessory



ACC-U000-R

9100 HS Series Occ Sensor Remote

ALL

Optional accessory



LED SHOP LIGHTS DUAL 3-WAY SWITCHABLE



SERIES OVERVIEW

NEW CONSTRUCTION



2004 LX

2008 LX

Part Number(s)	NZ-9445NC.2-QQ	NZ-9890NC.2-QQ
Description	LED Shop Light 4' - Dual 3-Way Switchable	LED Shop Light 8' - Dual 3-Way Switchable
CCT	Switchable: 3500/4000/5000 K	Switchable: 3500/4000/5000 K
Input Power	Switchable: 34/38/45 W	Switchable: 65/75/90 W
Max Efficacy	152 lm/W	152 lm/W
Max Lumens	6435 lm	12,870 lm
Input Voltage	120-277 V	120-277 V
IP Rating	IP20	IP20
Warranty	5 Years	5 Years
Avg Life	L70 > 100,000 Hours	L70 > 100,000 Hours
Dimensions	47.3" x 2.8" x 2.5"	94.2" x 2.8" x 2.5"
Operating Temp.	-20°C (-4°F) to 50°C (122°F)	-20°C (-4°F) to 50°C (122°F)
Dimmable	0 - 10 V DC	0 - 10 V DC
Housing	Sheet metal stamping; White	Sheet metal stamping; White
Accessories	Linkage Kit, Wire Cage	Linkage Kit, Wire Cage
Options	-	-

PACKAGING

	2004 LX	2008 LX
Box Dimensions	48.4" X 9.8" X 5.9"	95.9" X 6.9" X 5.9"
Box Weight	27.7 lbs	41.8 lbs
Units/Box	6	4
Boxes/Pallet	-	-

QUALIFICATIONS

	2004 LX	2008 LX
DLC Listed	STANDARD 5.1	STANDARD 5.1
UL Certified	1598	1598






LED SHOP LIGHTS DUAL 3-WAY SWITCHABLE



SERIES OVERVIEW

NEW CONSTRUCTION

ACCESSORIES

	Part Number	Description	Fits Products	Ordering Notes
	ACC-9000NC-LK	2000 LX Series Linkage Kit	ALL	Optional accessory
	ACC-9000NC-WC	2000 LX Series Wire Cage	ALL	Optional accessory
	ACC-9000NC-OS	2000 LX Series Occ Sensor w/ Bracket	ALL	Optional accessory



LED SHOP LIGHT RETROFITS DUAL 3-WAY SWITCHABLE



SERIES OVERVIEW

RETROFIT



2004R LX

2008R LX

Part Number(s)	NZ-9445.2-QQ	NZ-9890.2-QQ
Description	LED Shop Light Retrofit 4' - Dual 3-Way Switchable	LED Shop Light Retrofit 8' - Dual 3-Way Switchable
CCT	Switchable: 3500/4000/5000 K	Switchable: 3500/4000/5000 K
Input Power	Switchable: 34/38/45 W	Switchable: 65/75/90 W
Max Efficacy	138 lm/W	138 lm/W
Max Lumens	5940 lm	11,880 lm
Input Voltage	120-277 V	120-277 V
IP Rating	IP20	IP20
Warranty	5 Years	5 Years
Avg Life	L70 > 100,000 Hours	L70 > 100,000 Hours
Dimensions	48" x 5.8" x 2.4"	96.3" x 5.8" x 2.4"
Operating Temp.	-20°C (-4°F) to 50°C (122°F)	-20°C (-4°F) to 50°C (122°F)
Dimmable	0 - 10 V DC	0 - 10 V DC
Housing	Galvanized Steel; White	Galvanized Steel; White
Accessories	-	-
Options	-	-

PACKAGING

	2004R LX	2008R LX
Box Dimensions	50" X 7.3" X 6.3 "	50" X 7.3" X 6.3 "
Box Weight	14.5 lbs	14.5 lbs
Units/Box	2	1
Boxes/Pallet	-	-

QUALIFICATIONS

	2004R LX	2008R LX
DLC Listed	STANDARD 5.1	STANDARD 5.1
UL Certified	1598 C	1598 C

2000R
nZLED[®]
 AMERICAN ENGINEERED

LED SHOP LIGHT RETROFITS

STATIC POWER & CCT



SERIES OVERVIEW

RETROFIT**2004R LS****2008R LS**

Part Number(s)	NZ-9432	NZ-9865
Description	LED Shop Light Retrofit 4' - 32W	LED Shop Light Retrofit 8' - 65W
CCT	5000 K	5000 K
Input Power	32W	65W
Max Efficacy	134 lm/W	132 lm/W
Max Lumens	4288 lm	8560 lm
Input Voltage	120-277 V	120-277 V
IP Rating	IP20	IP20
Warranty	5 Years	5 Years
Avg Life	L70 > 100,000 Hours	L70 > 100,000 Hours
Dimensions	48.35" x 5.76" x 2.36"	6.7" x 5.76" x 2.36"
Operating Temp.	-4°F TO 122°F	-4°F TO 122°F
Dimmable	0 - 10 V DC	0 - 10 V DC
Housing	Galvanized Steel; White	Galvanized Steel; White
Accessories	-	-
Options	-	-

PACKAGING

Box Dimensions	-	-
Box Weight	-	-
Units/Box	-	-
Boxes/Pallet	-	-

QUALIFICATIONS

UL Certified	1598 C	1598 C
--------------	--------	--------



LED BAR LIGHTS DUAL 3-WAY SWITCHABLE



SERIES OVERVIEW

NEW CONSTRUCTION



2104 LX



2104 LS

Part Number(s)	NZ-3454.2-QQ	NZ-3364-C
Description	LED Vapor Tight 4' - Dual 3-Way Switchable	LED Bar Light 4' - Static Power & CCT
CCT	Switchable: 3500/4000/5000 K	5000 K
Input Power	Switchable: 34/38/45 W	36 W
Max Efficacy	138 lm/W	126 lm/W
Max Lumens	5940 lm	4524 lm
Input Voltage	120-277 V	90-305 V
IP Rating	IP65	IP61 (Dust Tight)
Warranty	5 Years	5 Years
Avg Life	L70 > 100,000 Hours	L70 > 100,000 Hours
Dimensions	47.2" x 3.7" x 3.1"	7.24" x 3.7" x 2.36"
Operating Temp.	-40°C / -40°F to 45°C / 113°F	3°F TO 104°F
Dimmable	0 - 10 V DC	0 - 10 V DC
Housing	Polycarbonate w/SS latches; White	Polycarbonate; White
Accessories	-	-
Options	-	-

PACKAGING

Box Dimensions	49.6" X 8.5" X 7.1"	-
Box Weight	22 lbs	-
Units/Box	4	-
Boxes/Pallet	-	-

QUALIFICATIONS

DLC Listed	STANDARD 5.1	-
UL Certified	1598	1598



LED DOWN LIGHTS DUAL 5-WAY SWITCHABLE



SERIES OVERVIEW

RETROFIT / NEW CONSTR



6006 DX



6008 DX

Part Number(s)	NZ-6306.4	NZ-6358.4
Description	LED Down Light 6" - Dual 5-Way Switchable	LED Down Light 8" - Dual 5-Way Switchable
CCT	Switchable: 2700/3000/3500/4000/5000 K	Switchable: 2700/3000/3500/4000/5000 K
Input Power	Switchable: 12/16/22/26/30 W	Switchable: 16/22/26/30/35 W
Max Efficacy	120 lm/W	120 lm/W
Max Lumens	3600 lm	4200 lm
Input Voltage	120-347 V	120-347 V
IP Rating	IP54	IP54
Warranty	5 Years	5 Years
Avg Life	L70 > 100,000 Hours	L70 > 100,000 Hours
Dimensions	8.3" x 8.3" x 4.8"	10.3" x 10.3" x 5.3"
Operating Temp.	-20°C (-4°F) to 40°C (104°F)	-20°C (-4°F) to 40°C (104°F)
Dimmable	0 - 10 V DC	0 - 10 V DC
Housing	PC/Aluminium; White	PC/Aluminium; White
Accessories	Goof Ring	Goof Ring
Options	-	-

PACKAGING

	NZ-6306.4	NZ-6358.4
Box Dimensions	18.5" X 17.9" X 18.9"	22.8" X 21.7" X 20"
Box Weight	21.9 lbs	27.5 lbs
Units/Box	12	12
Boxes/Pallet	-	-

QUALIFICATIONS

	NZ-6306.4	NZ-6358.4
Energy Star Rated	YES	YES
ETL Certified	YES	YES



LED DOWN LIGHTS DUAL 5-WAY SWITCHABLE



SERIES OVERVIEW

RETROFIT / NEW CONSTR

ACCESSORIES

	Part Number	Description	Fits Products	Ordering Notes
	ACC-6000-R6	6006 DX 6" Goof Ring	NZ-6306.4	Optional accessory
	ACC-6000-R8	6008 DX 8" Goof Ring	NZ-6358.4	Optional accessory



LED DOWN LIGHTS

120V - STATIC POWER & CCT



SERIES OVERVIEW

RETROFIT / NEW CONSTR



6006 DS



6008 DS

Part Number(s)	NZ-6156	NZ-6258
Description	LED Down Light 6" - 15W (120V)	LED Down Light 8" - 25W (120V)
CCT	4000 K	4000 K
Input Power	15 W	25 W
Max Efficacy	70 lm/W	68 lm/W
Max Lumens	1050 lm	1700 lm
Input Voltage	120 V	120 V
IP Rating	IP30	IP30
Warranty	5 Years	5 Years
Avg Life	L70 > 100,000 Hours	L70 > 100,000 Hours
Dimensions	7.32" x 4.69"	7.72" x 5.25"
Operating Temp.	-4°F TO 122°F	-4°F TO 122°F
Dimmable	0 - 10 V DC	0 - 10 V DC
Housing	PC/Aluminium; White	PC/Aluminium; White
Accessories	-	-
Options	-	-

PACKAGING

Box Dimensions	-	-
Box Weight	-	-
Units/Box	-	-
Boxes/Pallet	-	-

QUALIFICATIONS

Energy Star Rated	YES	YES
ETL Certified	-	YES



LED RETROFIT STRIP KITS LENSED w/MAGNETIC MOUNT



SERIES OVERVIEW

RETROFIT



0032 Ks

0034 Ks

0044 Ks

Part Number(s)	NZ-0327	NZ-0347	NZ-0447
Description	Lensed Retrofit Strip Kit - 30W 2ft	Lensed Retrofit Strip Kit - 30W 4ft	Lensed Retrofit Strip Kit - 40W 4ft
CCT	Optional: 4000, 5000 K	Optional: 4000, 5000 K	Optional: 4000, 5000 K
Input Power	30 W	30 W	40 W
Max Efficacy	XXXX lm/W	XXXX lm/W	XXXX lm/W
Max Lumens	3113 lm	3337 lm	4397 lm
Input Voltage	100-277 V	100-277 V	100-277 V
IP Rating	IP67	IP67	IP67
Warranty	7 Years	7 Years	7 Years
Avg Life	L70 > 100,000 Hours	L70 > 100,000 Hours	L70 > 100,000 Hours
Configuration	1 Driver, 2 24" Strips	1 Driver, 2 48" Strips	1 Driver, 2 48" Strips
Operating Temp.	23°F TO 122°F	23°F TO 122°F	23°F TO 122°F
Dimmable	0 - 10 V DC	0 - 10 V DC	0 - 10 V DC
Housing	-	-	-
Accessories	Strip Adder, Pig Tail & Whip, Misc Parts	Strip Adder, Pig Tail & Whip, Misc Parts	Strip Adder, Pig Tail & Whip, Misc Parts
Options	CCT	CCT	CCT

PACKAGING

Box Dimensions	-	-	-
Box Weight	-	-	-
Units/Box	-	-	-
Boxes/Pallet	-	-	-

QUALIFICATIONS

DLC Listed	-	STANDARD 5.1	STANDARD 5.1
ETL Certified	YES	YES	YES



LED RETROFIT STRIP KITS LENSED w/MAGNETIC MOUNT



SERIES OVERVIEW

RETROFIT

ACCESSORIES

	Part Number	Description	Fits Products	Ordering Notes
	ACC-0302-4	2' Single Strip Adder 4000K	NZ-0327	Optional accessory
	ACC-0302-5	2' Single Strip Adder 5000 K	NZ-0327	Optional accessory
	ACC-0304-4	4' Single Strip Adder 4000 K	NZ-0347, NZ-0447	Optional accessory
	ACC-0304-5	4' Single Strip Adder 5000 K	NZ-0347, NZ-0447	Optional accessory
	ACC- 0031	Pig Tail Connector	ALL	Optional accessory
	ACC- 0032	2 Leg Whip Connector	ALL	Optional accessory
	ACC- 0033	3 Leg Whip Connector	ALL	Optional accessory
	ACC- 0034	4 Leg Whip Connector	ALL	Optional accessory



LED RETROFIT STRIP KITS 24" STANDARD KITS



SERIES OVERVIEW

RETROFIT



9822

9834

9866

Part Number(s)	NZ-9822	NZ-9834	NZ-9866
Description	20W Standard Strip Kit	30W Standard Strip Kit	60W Standard Strip Kit
CCT	<i>Optional: 3500, 5000 K</i>	<i>Optional: 3500, 5000 K</i>	<i>Optional: 3500, 5000 K</i>
Input Power	20 W	30 W	60 W
Max Efficacy	148 lm/W	111 lm/W	110 lm/W
Max Lumens	2814 lm	3318 lm	6615 lm
Input Voltage	100-277 V	100-277 V	100-277 V
IP Rating	IP67 (Driver)	IP67 (Driver)	IP67 (Driver)
Warranty	10 Years	10 Years	10 Years
Avg Life	L70 > 100,000 Hours	L70 > 100,000 Hours	L70 > 100,000 Hours
Configuration	1 Driver, 2 24" Strips	1 Driver, 4 24" Strips	1 Driver, 6 24" Strips
Operating Temp.	23°F TO 122°F	23°F TO 122°F	23°F TO 122°F
Dimmable	0 - 10 V DC	0 - 10 V DC	0 - 10 V DC
Housing	-	-	-
Accessories	Diffuser, Strip Adder, Switch Base, Misc Parts	Diffuser, Strip Adder, Switch Base, Misc Parts	Diffuser, Strip Adder, Switch Base, Misc Parts
Options	CCT; Available in Inboard/Outboard config, P/N 9844-IO	CCT	CCT; Available in 8-strip config, P/N 9868

PACKAGING

Box Dimensions	-	-	-
Box Weight	-	-	-
Units/Box	-	-	-
Boxes/Pallet	-	-	-

QUALIFICATIONS

UL Certified	1598 C	1598 C	1598 C
--------------	--------	--------	--------



LED RETROFIT STRIP KITS 24" STANDARD KITS



SERIES OVERVIEW

RETROFIT

ACCESSORIES



Part Number	Description	Fits Products	Ordering Notes
ACC-9290	46.5" Strip Kit Curved Diffuser	ALL	Optional accessory
ACC-9292	2' X 4' Strip Kit Diffuser	ALL	Optional accessory
ACC-9293	Strip Kit Switch Base	ALL	Optional accessory
ACC-9294	Strip Kit Parts Kit	ALL	Optional accessory
ACC-9291-35	2 Strip Adder 3500 K	ALL	Optional accessory
ACC-9291-5	2 Strip Adder 5000 K	ALL	Optional accessory



LED AREA LIGHTS DUAL 3-WAY SWITCHABLE



SERIES OVERVIEW

NEW CONSTRUCTION



5010 AX



5030 AX

Part Number(s)	NZ-4150.12	NZ-4300.12
Description	LED Area Light 100-150W - Dual 3-Way Switchable	LED Area Light 200-300W - Dual 3-Way Switchable
CCT	Switchable: 3000/4000/5000 K	Switchable: 3000/4000/5000 K
Input Power	Switchable: 100/120/150 W	Switchable: 200/240/300 W
Max Efficacy	150 lm/W	150 lm/W
Max Lumens	22,500 lm	45,000 lm
Input Voltage	120-277 V	120-277 V
IP Rating	IP65	IP65
Warranty	5 Years	5 Years
Avg Life	L70 > 100,000 hours	L70 > 100,000 hours
Dimensions	23" x 10.3" x 2.8"	27.4" x 13" x 2.9"
Operating Temp.	-40°F~122°F	-40°F~122°F
Dimmable	0 - 10 V DC	0 - 10 V DC
Housing	Die-cast Aluminum; Bronze	Die-cast Aluminum; Bronze
Accessories	Motion sensor, Sensor remote	Motion sensor, Sensor remote
Options	Yoke mount, Flood mount, Photocell	Yoke mount, Flood mount, Photocell

PACKAGING

	NZ-4150.12	NZ-4300.12
Box Dimensions	25.6" X 12.2" X 5.83"	30.12" x 14.95" x 5.83"
Box Weight	10.8 lbs	14.1 lbs
Units/Box	1	1
Boxes/Pallet	-	-

QUALIFICATIONS

	NZ-4150.12	NZ-4300.12
DLC Listed	PREMIUM 5.1	PREMIUM 5.1
UL Certified	1598	1598



LED AREA LIGHTS DUAL 3-WAY SWITCHABLE



SERIES OVERVIEW

NEW CONSTRUCTION

ACCESSORIES



Part Number	Description	Fits Products	Ordering Notes
ACC-4150.12FM	5010 AX Flood Mount	NZ-4150.12	Optional accessory



ACC-4300.12FM	5030 AX Flood Mount	NZ-4300.12	Optional accessory
---------------	---------------------	------------	--------------------



ACC-4000.YM	AX Series Yoke Mount	NZ-4150.12, NZ-4300.12	Optional accessory
-------------	----------------------	------------------------	--------------------



ACC-4000.MS	AX Series Motion Sensor	NZ-4150.12, NZ-4300.12	Optional accessory
-------------	-------------------------	------------------------	--------------------



ACC-4000.MSR	AX Series Motion Sensor Remote	NZ-4150.12, NZ-4300.12	Optional accessory
--------------	--------------------------------	------------------------	--------------------



ACC-4000.PC	AX Series Photocell	NZ-4150.12, NZ-4300.12	Optional accessory
-------------	---------------------	------------------------	--------------------



LED AREA LIGHTS 3-WAY POWER SWITCHABLE



SERIES OVERVIEW

NEW CONSTRUCTION



5020 AR

Part Number(s)	NZ-4185.1
Description	LED Area Light 150-200W - 3-Way Switchable Power
CCT	5000 K
Input Power	Switchable: 150W/185W/200 W
Max Efficacy	130 lm/W
Max Lumens	26,000 lm
Input Voltage	100-277 V
IP Rating	IP65
Warranty	5 Years
Avg Life	L70 > 100,000 hours
Dimensions	13.1" x 27" x 3.5"
Operating Temp.	-4°F TO 113°F
Dimmable	0 - 10 V DC
Housing	Die-cast Aluminum; Bronze
Accessories	Photocell
Options	Direct mount

PACKAGING

Box Dimensions	-
Box Weight	-
Units/Box	-
Boxes/Pallet	-

QUALIFICATIONS

DLC Listed	PREMIUM 5.1
UL Certified	1598



LED AREA LIGHTS 3-WAY POWER SWITCHABLE



SERIES OVERVIEW

NEW CONSTRUCTION

ACCESSORIES



Part Number	Description	Fits Products	Ordering Notes
ACC-4000-PC	5010 AR Photocell w/ Socket	NZ-4150.14	Optional accessory



LED WALL PACKS DUAL 3-WAY SWITCHABLE



SERIES OVERVIEW

NEW CONSTRUCTION



4002 WX



4006 WX



4010 WX

Part Number(s)	NZ-4020.2	NZ-4060M.11	NZ-4120M.11
Description	Mini Wall Pack 10-20W - Dual 3-Way Switchable	LED Wall Pack 28-60W - Dual 3-Way Switchable	LED Wall Pack 80-120W - Dual 3-Way Switchable
CCT	Switchable: 3000/4000/5000 K	Switchable: 3000/4000/5000 K	Switchable: 3000/4000/5000 K
Input Power	Switchable: 10/15/20 W	Switchable: 28/40/60 W	Switchable: 80/100/120 W
Max Efficacy	140 lm/W	150 lm/W	152 lm/W
Max Lumens	2800 lm	9000 lm	18,240 lm
Input Voltage	120-277 V	120-277 V	120-277 V
IP Rating	IP65	IP65	IP65
Warranty	7 Years	7 Years	7 Years
Avg Life	L70 > 100,000 Hours	L70 > 100,000 Hours	L70 > 100,000 Hours
Dimensions	8.2" x 5" x 2.8"	14.2" x 8.6" x 6.5"	14.2" x 8.6" x 6.5"
Operating Temp.	-40°F~122°F	-40°F~122°F w/BBU: 32°F~122°F	-40°F~122°F w/BBU: 32°F~122°F
Dimmable	0 - 10 V DC	0 - 10 V DC	0 - 10 V DC
Housing	Die-cast Aluminum; Bronze	Die-cast Aluminum; Bronze	Die-cast Aluminum; Bronze
Accessories	Factory-installed Photocell	Factory-installed Photocell	Factory-installed Photocell
Options	-	Dark Sky Shield	Dark Sky Shield

PACKAGING

	NZ-4020.2	NZ-4060M.11	NZ-4120M.11
Box Dimensions	16.1" X 11.2" X 9.4"	16.1" X 11.4" X 9.4"	16.1" X 11.4" X 9.4"
Box Weight	19.8 lbs	9.9 lbs	9.9 lbs
Units/Box	10	1	1
Boxes/Pallet	-	-	-

QUALIFICATIONS

	NZ-4020.2	NZ-4060M.11	NZ-4120M.11
DLC Listed	PENDING	PREMIUM 5.1	PENDING
UL Certified	1598	1598	1598



LED WALL PACKS DUAL 3-WAY SWITCHABLE



SERIES OVERVIEW

NEW CONSTRUCTION

ACCESSORIES



Part Number	Description	Fits Products	Ordering Notes
ACC-4000M-Shield	4000 WX Series Dark Sky Shield	NZ-4060M.11, NZ-4120M.11	Optional accessory



LED WALL PACKS 3-WAY CCT SWITCHABLE



SERIES OVERVIEW

NEW CONSTRUCTION



4006 WC



4006R WC

Part Number(s)	NZ-4060M.7	NZ-4060.1.R
Description	LED Wall Pack 60W - 3-Way Switchable CCT	LED Wall Pack 60W Rotatable - 3-Way Switchable CCT
CCT	Switchable: 3000/4000/5000 K	Switchable: 3000/4000/5000 K
Input Power	60W	60W
Max Efficacy	151 lm/W	143 lm/W
Max Lumens	9060 lm	8580 lm
Input Voltage	120-277 V	120-277 V
IP Rating	IP65	IP65
Warranty	7 Years	7 Years
Avg Life	L70 > 100,000 Hours	L70 > 100,000 Hours
Dimensions	14.4" x 9.3" x 7.4"	10" x 9.4" x 5.9"
Operating Temp.	-40°F~122°F w/BBU: 32°F~122°F	-22°F~113°F w/BBU: 32°F~113°F
Dimmable	0 - 10 V DC	0 - 10 V DC
Housing	Die-cast Aluminum; Bronze	Die-cast Aluminum; Bronze
Accessories	Motion Sensor, Motion Sensor Remote	Motion Sensor, Motion Sensor Remote
Options	-	-

PACKAGING

	NZ-4060M.7	NZ-4060.1.R
Box Dimensions	15.9" X 11.6" X 9.8"	16.3" x 12.2" x 12.6"
Box Weight	7.3 lbs	15.1 lbs
Units/Box	1	2
Boxes/Pallet	-	-

QUALIFICATIONS

	NZ-4060M.7	NZ-4060.1.R
DLC Listed	PREMIUM 5.1	PREMIUM 5.1
UL Certified	1598	1598



LED WALL PACKS 3-WAY CCT SWITCHABLE



SERIES OVERVIEW

NEW CONSTRUCTION

ACCESSORIES

Part Number	Description	Fits Products	Ordering Notes
ACC-4000WC.MS	4000 WC Series Motion Sensor	NZ-4060M.7, NZ-4060.1.R	Optional accessory
ACC-4000WC.MSR	4000 WC Series Motion Sensor Remote	NZ-4060M.11, NZ-4120M.11	Optional accessory



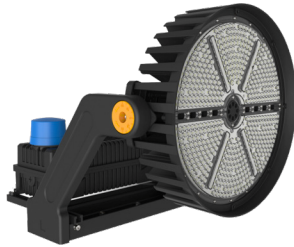


LED SPORTS & STADIUM LIGHTS HIGH-PERFORMANCE



SERIES OVERVIEW

RETROFIT / NEW CONSTR



7004 SS



7005 SS



7006 SS

Part Number(s)	NZ-SP400.1	NZ-SP500.1	NZ-SP600.1
Description	LED Sports Light - 400W	LED Sports Light - 500W	LED Sports Light - 600W
CCT	<i>Optional: 4000,4500,5000,5700 K</i>	<i>Optional: 4000,4500,5000,5700 K</i>	<i>Optional: 4000,4500,5000,5700 K</i>
Input Power	400 W	500 W	600 W
Max Efficacy	144 lm/W	143 lm/W	143 lm/W
Max Lumens	58,333 lm	71,521 lm	82,225 lm
Input Voltage	277-480 V	277-480 V	277-480 V
IP Rating	IP65	IP65	IP65
Warranty	5 Years	5 Years	5 Years
Avg Life	L70 > 100,000 hours	L70 > 100,000 hours	L70 > 100,000 hours
Dimensions	17.3" x 17.3" x 20.6"	17.3" x 17.3" x 20.6"	21.7" x 22.5" x 20.6"
Operating Temp.	-40°F to ~122°F	-40°F to ~122°F	-40°F to ~122°F
Dimmable	0 - 10 V DC	0 - 10 V DC	0 - 10 V DC
Housing	Die-cast Aluminum; Black, Bronze, or Custom	Die-cast Aluminum; Black, Bronze, or Custom	Die-cast Aluminum; Black, Bronze, or Custom
Accessories	Sensor Receptacle + Photocell	Sensor Receptacle + Photocell	Sensor Receptacle + Photocell
Options	Flood or Slip-Fitter Mount	Flood or Slip-Fitter Mount	Flood or Slip-Fitter Mount

PACKAGING

	NZ-SP400.1	NZ-SP500.1	NZ-SP600.1
Box Dimensions	21.7" x 20.1" x 20.1"	21.7" x 20.1" x 20.1"	24.6" x 23.8" x 23"
Box Weight	38.7 lbs	38.7 lbs	57 lbs
Units/Box	1	1	1
Boxes/Pallet	-	-	-

QUALIFICATIONS

	NZ-SP400.1	NZ-SP500.1	NZ-SP600.1
DLC Listed	PREMIUM 5.1	PREMIUM 5.1	PREMIUM 5.1
UL Certified	1598	1598	1598



LED SPORTS & STADIUM LIGHTS HIGH-PERFORMANCE



SERIES OVERVIEW

RETROFIT / NEW CONSTR



7007 SS



7010 SS



7012 SS

Part Number(s)	NZ-SP750.1	NZ-SP1000.1	NZ-SP1200.1
Description	LED Sports Light - 750W	LED Sports Light - 1000W	LED Sports Light - 1200W
CCT	<i>Optional: 4000,4500,5000,5700 K</i>	<i>Optional: 4000,4500,5000,5700 K</i>	<i>Optional: 4000,4500,5000,5700 K</i>
Input Power	750 W	1000 W	1200 W
Max Efficacy	144 lm/W	145 lm/W	143 lm/W
Max Lumens	102,917 lm	141,633 lm	166,268 lm
Input Voltage	277-480 V	277-480 V	277-480 V
IP Rating	IP65	IP65	IP65
Warranty	5 Years	5 Years	5 Years
Avg Life	L70 > 100,000 hours	L70 > 100,000 hours	L70 > 100,000 hours
Dimensions	21.7" x 22.5" x 20.6"	23.1" x 23.1" x 23.4"	23.1" x 23.1" x 23.4"
Operating Temp.	-40°F to ~122°F	-40°F to ~122°F	-40°F to ~122°F
Dimmable	0 - 10 V DC	0 - 10 V DC	0 - 10 V DC
Qualifications	Die-cast Aluminum; Black, Bronze, or Custom	Die-cast Aluminum; Black, Bronze, or Custom	Die-cast Aluminum; Black, Bronze, or Custom
Accessories	Sensor Receptacle + Photocell	Sensor Receptacle + Photocell	Sensor Receptacle + Photocell
Options	Flood or Slip-Fitter Mount	Flood or Slip-Fitter Mount	Flood or Slip-Fitter Mount

PACKAGING

Box Dimensions	24.6" x 23.8" x 23"	26.4" x 24.5" x 24"	26.4" x 24.5" x 24"
Box Weight	57 lbs	68.6 lbs	68.6 lbs
Units/Box	1	1	1
Boxes/Pallet	-	-	-

QUALIFICATIONS

DLC Listed	PREMIUM 5.1	PREMIUM 5.1	PREMIUM 5.1
UL Certified	1598	1598	1598



OTHER LIGHTING PRODUCTS FLOOD, GARAGE & CANOPY



SERIES OVERVIEW

NEW CONSTRUCTION



5105 AC



5215 AS



5306 AX

Part Number(s)	NZ-2755.14	NZ-8150.3JB	NZ-40260.7
Description	LED Flood Light 55W - 3-Way Switchable CCT	LED Canopy Light - 150W	LED Garage Light - Dual 3-Way Switchable
CCT	Switchable: 3000/4000/5000 K	5000 K	Switchable: 3000/4000/5000 K
Input Power	55 W	150 W	Switchable: 40/50/60 W
Max Efficacy	125 lm/W	140 lm/W	145 lm/W
Max Lumens	6875 lm	21,000 lm	8700 lm
Input Voltage	120-277 V	120-277 V	120-277 V
IP Rating	IP65	IP65	IP65
Warranty	5 Years	5 Years	5 Years
Avg Life	L70 > 100,000 Hours	L70 > 100,000 Hours	L70 > 100,000 Hours
Dimensions	10.7" x 5.8" x 1.8"	20.5" x 20.5" x 9.6"	9.6" x 9.6" x 3.6"
Operating Temp.	-40°F~122°F	-40°F~113°F	-40°F~122°F
Dimmable	0 - 10 V DC	0 - 10 V DC	0 - 10 V DC
Housing	Die-cast Aluminum; Bronze	Die-cast Aluminum; White	Die-cast Aluminum; White
Accessories	-	-	-
Options	-	-	-

PACKAGING

	NZ-2755.14	NZ-8150.3JB	NZ-40260.7
Box Dimensions	17" X 13.6" X 14.1"	22" x 22" x 6.3"	21.1" x 11.6" x 22.8"
Box Weight	35.9 lbs	19.8 lbs	41.4 lbs
Units/Box	10	1	1
Boxes/Pallet	-	-	-

QUALIFICATIONS

	NZ-2755.14	NZ-8150.3JB	NZ-40260.7
DLC Listed	PREMIUM 5.1	PREMIUM 5.1	PREMIUM 5.1
UL Certified	1598	1598	1598



OTHER LIGHTING PRODUCTS COB LIGHTS



SERIES OVERVIEW

RETROFIT / NEW CONSTR



6009



6030

Part Number(s)	NZ-6009	NZ-6030
Description	9W Edison Base COB Light	30W Mogul Base COB Light
CCT	5000 K	5000 K
Input Power	9 W	30 W
Max Efficacy	130 lm/W	113 lm/W
Max Lumens	1170 lm	3400 lm
Input Voltage	100-277 V	100-277 V
IP Rating	IP64	IP64
Warranty	5 Years	5 Years
Avg Life	L70 > 100,000 Hours	L70 > 100,000 Hours
Dimensions	5.7" x 1.77"	9.06" x 3.66"
Operating Temp.	-4°F TO 113°F	-4°F TO 113°F
Dimmable	0 - 10 V DC	0 - 10 V DC
Housing	PC/Aluminum	PC/Aluminum
Accessories	-	-
Options	-	-

PACKAGING

Box Dimensions	-	-
Box Weight	-	-
Units/Box	-	-
Boxes/Pallet	-	-

QUALIFICATIONS

UL Certified	1598	1598
--------------	------	------



OTHER LIGHTING PRODUCTS COB LIGHTS



SERIES OVERVIEW

RETROFIT / NEW CONSTR



6080



6100

Part Number(s)	NZ-6080	NZ-6100
Description	80W Mogul Base COB Light	100W Mogul Base COB Light
CCT	5000 K	5000 K
Input Power	80 W	100 W
Max Efficacy	117 lm/W	116 lm/W
Max Lumens	9400 lm	11,600 lm
Input Voltage	100-277 V	100-277 V
IP Rating	IP64	IP64
Warranty	5 Years	5 Years
Avg Life	L70 > 100,000 Hours	L70 > 100,000 Hours
Dimensions	10.5" x 4.5"	11.5" x 4.5"
Operating Temp.	-4°F TO 113°F	-4°F TO 113°F
Dimmable	0 - 10 V DC	0 - 10 V DC
Housing	PC/Aluminum	PC/Aluminum
Accessories	-	-
Options	-	-

PACKAGING

Box Dimensions	-	-
Box Weight	-	-
Units/Box	-	-
Boxes/Pallet	-	-

QUALIFICATIONS

UL Certified	1598	1598
--------------	------	------

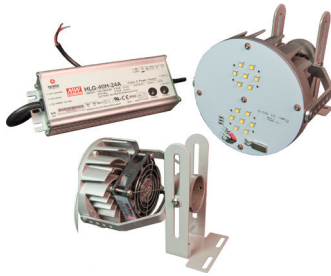


OTHER LIGHTING PRODUCTS HID RETROFITS



SERIES OVERVIEW

RETROFIT



9035



9080



9120

Part Number(s)	NZ-9035	NZ-9080	NZ-9120
Description	35W HID Retrofit	80W HID Retrofit	120W HID Retrofit
CCT	5000 K	5000 K	5000 K
Input Power	35 W	80 W	120 W
Max Efficacy	105 lm/W	112 lm/W	112 lm/W
Max Lumens	3629 lm	8963 lm	13,690 lm
Input Voltage	100-277 V	100-277 V	100-277 V
IP Rating	IP40	IP40	IP40
Warranty	7 Years	7 Years	7 Years
Avg Life	L70 > 100,000 Hours	L70 > 100,000 Hours	L70 > 100,000 Hours
Dimensions	(7.09-8.27)" x 5.2" x 5.12"	(9.25-11.22)" x 6.3" x (5.12-5.9)"	(9.25-11.22)" x 6.3" x (5.12-5.9)"
Operating Temp.	-4°F TO 131°F	-4°F TO 131°F	-4°F TO 131°F
Dimmable	0 - 10 V DC	0 - 10 V DC	0 - 10 V DC
Housing	Die-cast Aluminum	Die-cast Aluminum	Die-cast Aluminum
Accessories	-	-	-
Options	-	-	-

PACKAGING

Box Dimensions	-	-	-
Box Weight	-	-	-
Units/Box	-	-	-
Boxes/Pallet	-	-	-

QUALIFICATIONS

UL Certified	1598 C	1598 C	1598 C
--------------	--------	--------	--------

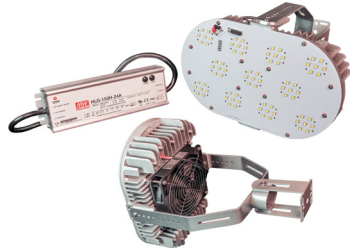


OTHER LIGHTING PRODUCTS HID RETROFITS



SERIES OVERVIEW

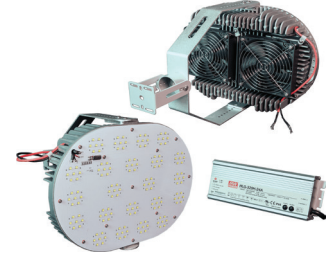
RETROFIT



9150



9200



9300

Part Number(s)	NZ-9150	NZ-9200	NZ-9300.2
Description	150W HID Retrofit	200W HID Retrofit	300W HID Retrofit
CCT	5000 K	5000 K	5000 K
Input Power	150 W	200 W	300 W
Max Efficacy	111 lm/W	113 lm/W	100 lm/W
Max Lumens	16,790 lm	22,850 lm	32,390 lm
Input Voltage	100-277 V	100-277 V	100-277 V
IP Rating	IP40	IP40	IP40
Warranty	7 Years	7 Years	7 Years
Avg Life	L70 > 100,000 Hours	L70 > 100,000 Hours	L70 > 100,000 Hours
Dimensions	(12.8-13.98)" x 7.17" x (5.12-6.3)"	(12.8-13.98)" x 7.17" x (5.12-6.3)"	(14.96-17.52)" x 10.24" x (5.12-6.3)"
Operating Temp.	-4°F TO 131°F	-4°F TO 131°F	-4°F TO 131°F
Dimmable	0 - 10 V DC	0 - 10 V DC	0 - 10 V DC
Housing	Die-cast Aluminum	Die-cast Aluminum	Die-cast Aluminum
Accessories	-	-	-
Options	-	-	-

PACKAGING

Box Dimensions	-	-	-
Box Weight	-	-	-
Units/Box	-	-	-
Boxes/Pallet	-	-	-

QUALIFICATIONS

UL Certified	1598 C	1598 C	1598 C
--------------	--------	--------	--------



EGRESS, POWER & SENSORS EMERGENCY/EXIT LIGHTING



SERIES OVERVIEW

RETROFIT / NEW CONSTR



9006

9008

9010

Part Number(s)	NZ-9006.1	NZ-9008.1	NZ-9010.1
Description	LED Dual-Head Emergency Light	LED Exit Sign	LED Dual-Head Exit Emergency Combo
Backup Time	Minimum 90-minute emergency illumination	Minimum 90-minute emergency illumination	Minimum 90-minute emergency illumination
Battery	3.6 V, maintenance-free, rechargeable NiCd battery	3.6 V, maintenance-free, rechargeable NiCd battery	9.6 V, maintenance-free, rechargeable NiCd battery
Input Voltage	120-277 V	120-277 V	120-277 V
Environment	UL Listed for damp locations	UL Listed for damp locations	UL Listed for damp locations
Warranty	5 Years	5 Years	5 Years
Avg Life	L70 > 100,000 Hours	L70 > 100,000 Hours	L70 > 100,000 Hours
Dimensions	-	-	-
Operating Temp.	68°F TO 86°F	68°F TO 86°F	68°F TO 86°F
Dimmable	0 - 10 V DC	0 - 10 V DC	0 - 10 V DC
Housing	PC; White	PC; White w/Red letters	PC; White w/Red letters
Accessories	-	-	-
Options	SDT (Self-Diagnostic Testing)	SDT (Self-Diagnostic Testing), Green lettering	SDT (Self-Diagnostic Testing)

PACKAGING

Box Dimensions	-	-	-
Box Weight	-	-	-
Units/Box	-	-	-
Boxes/Pallet	-	-	-

QUALIFICATIONS

UL Certified	1598	1598	1598
--------------	------	------	------



EGRESS, POWER & SENSORS STEP-DOWN TRANSFORMERS



SERIES OVERVIEW

RETROFIT / NEW CONSTR



PHOTO
COMING SOON

4827

4827-38

Part Number(s)	NZ-4827	NZ-4827-38
Description	250W 480V to 277V Step Down Transformer	375W 480V to 277V Step Down Transformer
Warranty	3 Years	3 Years
-	-	-
-	-	-
-	-	-
-	-	-
-	-	-
-	-	-
-	-	-
-	-	-
-	-	-
-	-	-
-	-	-
Accessories	-	-
Options	-	-

PACKAGING

Box Dimensions	-	-
Box Weight	-	-
Units/Box	-	-
Boxes/Pallet	-	-

QUALIFICATIONS

UL Certified	YES	YES
--------------	-----	-----



EGRESS, POWER & SENSORS SURGE SUPPRESSION



SERIES OVERVIEW

RETROFIT / NEW CONSTR



	9001	9001-480
Part Number(s)	NZ-9001	NZ-9001-480
Description	Parallel Surge Suppression 120-347V	Parallel Surge Suppression 480V
Warranty	3 Years	3 Years
-	-	-
-	-	-
-	-	-
-	-	-
-	-	-
-	-	-
-	-	-
-	-	-
-	-	-
-	-	-
-	-	-
Accessories	-	-
Options	-	-

PACKAGING

Box Dimensions	-	-
Box Weight	-	-
Units/Box	-	-
Boxes/Pallet	-	-

QUALIFICATIONS

UL Certified	YES	YES
--------------	-----	-----



EGRESS, POWER & SENSORS BATTERY PACKS



SERIES OVERVIEW

RETROFIT / NEW CONSTR



9111-8

9111-25

9111-25H

Part Number(s)	NZ-9111-8.3	NZ-9111-25	NZ-9111-25H
Description	8W Troffer Emergency Battery Pack	25W High Bay / HID Emergency Battery Pack	25W High Bay / HID Emergency Battery Pack
Warranty	5 Years	5 Years	5 Years
-	-	-	-
-	-	-	-
-	-	-	-
-	-	-	-
-	-	-	-
-	-	-	-
-	-	-	-
-	-	-	-
-	-	-	-
-	-	-	-
Accessories	-	-	-
Options	-	-	-

PACKAGING

Box Dimensions	-	-	-
Box Weight	-	-	-
Units/Box	-	-	-
Boxes/Pallet	-	-	-

QUALIFICATIONS

ETL Certified	YES	YES	YES
---------------	-----	-----	-----



EGRESS, POWER & SENSORS

OCC SENSOR & DIMMER



SERIES OVERVIEW

RETROFIT / NEW CONSTR



5008



7001

Part Number(s)	NZ-5008	NZ-7001.1
Description	Wall Mount Occupancy Sensor	Wall Switch Dimmer
Warranty	3 Years	3 Years
-	-	-
-	-	-
-	-	-
-	-	-
-	-	-
-	-	-
-	-	-
-	-	-
-	-	-
-	-	-
Accessories	-	-
Options	-	-

PACKAGING

Box Dimensions	-	-
Box Weight	-	-
Units/Box	-	-
Boxes/Pallet	-	-

QUALIFICATIONS

UL Certified	-	YES
ETL Certified	YES	-



LED PRODUCT CATALOG COMPANY CONTACTS

AUTUMN 2024

REVISION 24.3.2



Sales Support

Western Carolinas, VA, TN, North GA	<i>Taylor Keinat</i>	taylor.keinat@netzero-usa.com
FL, TN, North GA	<i>Andrew Berry</i>	andrew.berry@netzero-usa.com
AL, MS, South GA	<i>Sidney Gillett</i>	sidney.gillett@netzero-usa.com
Carolina Coast, TN, North GA	<i>Heys McMath</i>	heys.mcmath@netzero-usa.com
KY, TN, North GA	<i>John Ficcarotta</i>	john.ficcarotta@netzero-usa.com
National Accounts	<i>Mark Sennett</i>	mark.sennett@netzero-usa.com
Promotions / Partnerships	<i>Anthony Meeks</i>	anthony.meeks@netzero-usa.com

Product Support

Technical & Installation	<i>Jeffery Bell</i>	jeffb@netzero-usa.com
RMA / Warranty	<i>Svetlana Zhavoronkova</i>	svetlana.z@netzero-usa.com
Order Processing, AR/AP	<i>Ximena Gonzalez</i>	ximena.gonzalez@netzero-usa.com
Product Orders		orders@netzero-usa.com

Operations Support

Project Operations	<i>Steven Hardy</i>	steven.hardy@netzero-usa.com
Financing	<i>Amanda Howard</i>	amanda@netzero-usa.com
Shipping & Tracking	<i>DeMarco Summerville</i>	demarco.summerville@netzero-usa.com

WE ARE YOUR LIGHTING DEPARTMENT

NetZero USA® is ready to help you save energy, reduce fixed costs, and improve the conditions at your facility with safer, better quality, high-performance light. We specialize in providing transformative LED lighting upgrades in an end-to-end, turn-key service – *at a net-zero cost*.

If you prefer to replace your lighting incrementally, we can supply your team with our premium LED lighting products at a *manufacturer-direct price* through our **Buy-Direct Lighting Program**.

Get Started Today – Our Commercial LED Lighting Team is standing by to assist.



Scan to Download Contact

NetZero USA®
LED Solutions Sales Team

(888) 326-2220
sales@netzero-usa.com



We love NetZero USA's retrofit products. Their flat panels, center baskets, and shop lights are hands-down the best products on the market. Our installation time was literally cut in half and our price to the customer remained the same. Less time installing, less time cleaning up, less waste, less dollars on labor and it looks like a new fixture. We get compliments on how clean our jobs are now.

– Project Manager



NetZero USA's LED retrofit product line has our customers coming back for more. When we demoed the retrofits, our installers got excited about trying them out. They all came back and said they take far less time to install and reduce disposal cost. NetZero USA's retrofits have brought us customers that typically went to our competitors. I guess it comes from word of mouth. Either way, it's good for us.

– Director of Procurement